

Gioacchino Rossini
L'Italiana in Algeri Overture

VIOLONCELLO E.
CONTRABBASSO

Andante
PIZZ.

p

ARCO PIZZ
sf *p*

ARCO
pp

sf *sf* *p* *sf* *pp* *Cresc.*

V. CELLO
sf *p* PIZZ

C. BASSO
sf *p* PIZZ

UNITI

Allegro

ARCO
ff *f* *ff* **B**

p

p cresc.

mf cresc. sempre *ff*

C 2

D

V. CELLO

C. BASS()

f *p* *pp*

f

E 3

UNITI

f *pp* *p*

PIZZ.

F

ARCO

p

G PIZZ.

p

ARCO

H⁴

p

pp

cresc.

I⁵

pp *cresc.* *p cresc.*

mf cresc. *f cresc.*

L

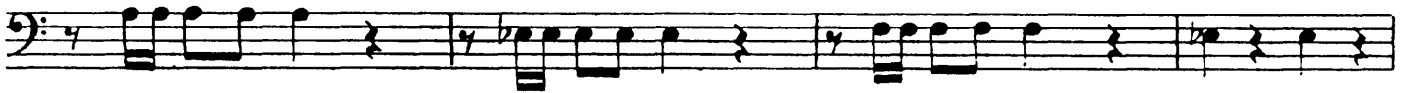
ff

M⁶ **N**

f

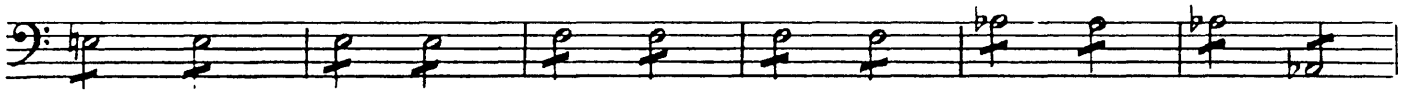


07



P

8



Q V. CELLO



R 9

PIZZ



UNITI

5

ARCO



PIZZ

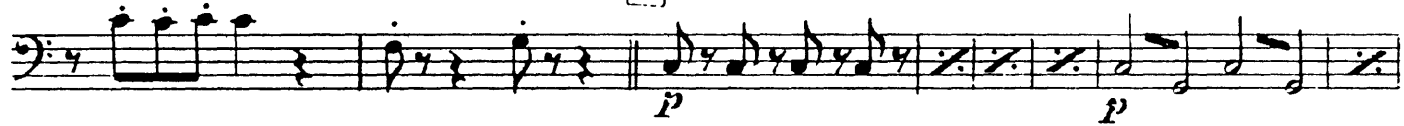


T

ARCO



10 Più mosso



U



cresc.

pp



mf

mf

V 11 1^aV.



f

ff

Z



ff

